

lagoon[®] Advanced Care

Absolute set
The ideal replacement for any dry-cleaning operation



Features and benefits



Keep customers coming back

Outstanding results for garments of every type thanks to specialized detergents and dedicated programs



Delicate on the delicates

Gentle on fine textiles and wools labelled dry-clean only, as less mechanical action. Woolmark-approved



Rapid return on investment

With a better loading factor, less prespotting, easier finishing and faster process times



Sustainable and eco-friendly

Water-based cleaning with none of the disadvantages of PERC, which can be dangerous to staff



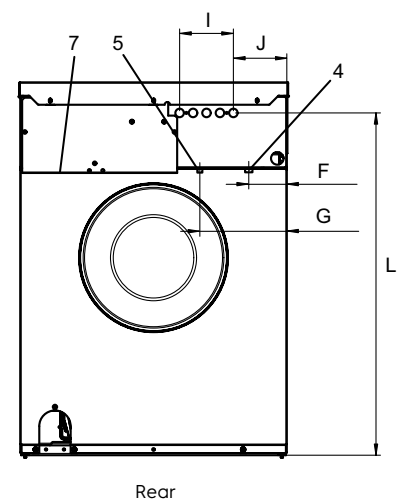
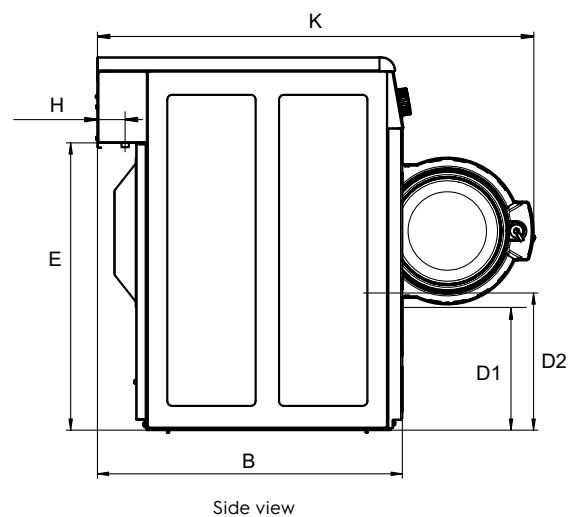
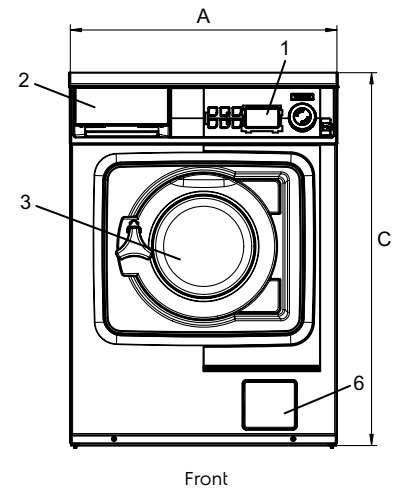
Dry to dry in 1 hour

Smart chemicals and processes mean garments are fully dried in the dryer - no hang-dry

Main specifications				W555H	W5180H	T5130	T5350
Max. capacity	Laundry	filling factor 1:9	kg	6	20	-	-
	Wool	filling factor 1:15	kg	4	14	-	-
	Silk	filling factor 1:18	kg	3	10	-	-
Max. capacity	Drying	filling factor 1:18	kg	-	-	7	19
Drum,	volume		litre	53	180	130	349
	diameter		∅ mm	452	725	575	760
Extraction			rpm	1450	1055	-	-
G-factor				530	450		
Heating alternative		electricity	kW	4.4	18	5.1	18
Consumption data "lagoon 6W02CH"							
Total time	Wool High extraction		min	22	22	25	25
	Wool Medium extraction		min	23	23	-	-
	Silk		min	16	16	-	-
	AIO Mild		min	20	20	-	-
	AIO Care		min	17	17	-	-
	Curtains		min	-	20	-	-
Water consumption (cold+hot)	Wool High extraction		litre	26	110	-	-
	Wool Medium extraction		litre	25	106	-	-
	Silk		litre	25	80	-	-
	AIO Mild		litre	26	85	-	-
	AIO Care		litre	25	80	-	-
	Curtains		litre	-	95	-	-
Energy consumption (motor/heating/water)	Wool High extraction		kWh	0.05/0.25	0.15/1.0	-	-
	Wool Medium extraction		kWh	0.05/0.25	0.15/1.0	-	-
	Silk		kWh	0.05/0.2	0.05/0.6	-	-
	AIO Mild		kWh	0.05/0.3	0.15/1.0	-	-
	AIO Care		kWh	0.05/0.25	0.05/0.95	-	-
	Curtains		kWh	-	0.05/0.7		
Consumption data "Normal 60°C"							
Total time			min	49	46	32	27
Water consumption (cold+hot)			litre	38+10	128+31	-	-
Energy consumption (motor/heating/hot water)			kWh	0.2/0.2/0.6	0.5/0.9/2	2.78	7.7
Residual moisture			%	46	48	-	-
Evaporation			g/min	-	-	92.8	289
Energy/Water evaporation			kWh/l	-	-	0.94	0.99

Electrical connections					
Heating alternative	Main voltage		Heating power kW	Total power kW	Recommended fuse A
	Hz	Hz			
Electric heated	220-240V 1N ~	50/60	2.2/2.8	2.4/3.0	16
	220-240V 1N ~	50/60	4.4	4.6	20
	220-230V 1N ~	50/60	4.4	4.6	25
	220-240V 3 ~	50/60	4.4	4.6	16
	220-230V 3 ~	50/60	4.4	4.6	20
	380-415V 3N ~	50/60	4.4	4.6	10
	380-415V 3 ~	50/60	3.6	3.8	10
	440V/480 3 ~	60	4.0/4.4	4.3/4.7	10
Non heated	220-480V 1/3 ~	50/60	-	0.5	10

Water connections		W555H
Water valves	DN	20
Water pressure	kPa	200-500
Capacity at 300 kPa	l/min	17
Drain valve	ø mm	50
Draining capacity	l/min	160
Liquid detergent supplies		5
Floor requirements		
Frequency of the dynamic force	Hz	24.2
Floor load at max extraction	kN	1.02 ± 0.3
Sound levels		
Sound power/pressure level at extraction*	dB(A)	70/56
Sound power/pressure level at wash*	dB(A)	56/42
Heat emission		
% of installed power, max		5
Shipping data**		
Shipping volume	net, kg crated, m ³	100 0.46
Accessories		
Stainless steel fluff collector		x
Stacking kit with tumble dryer		x
Steel base		x
Dimensions in mm		
A	Width	595
B	Depth	681
C	Height	832
D1		284
D2		310
E		641
F		84
G		194
H		48
I		120
J		119
K		974
L		764
1	Operating panel	5 Hot water
2	Detergent box	6 Drain pump
3	Door opening ø 255 mm	7 Electrical connection
4	Cold water	



Front and side panels in light grey and blue (RAL 260 70 05, 250 60 30)

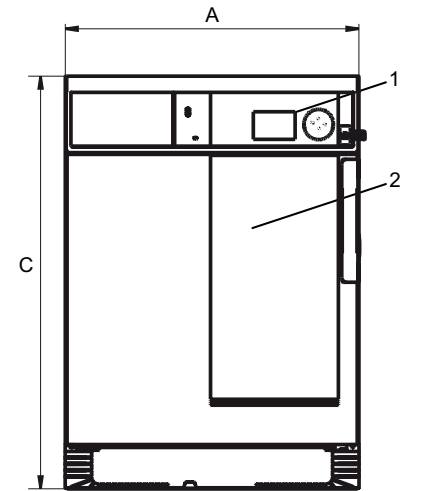
* Sound power levels measured according to ISO 60704.

** Average data. Crated weight/shipping volume depends on configuration. Please contact logistics for exact measures.

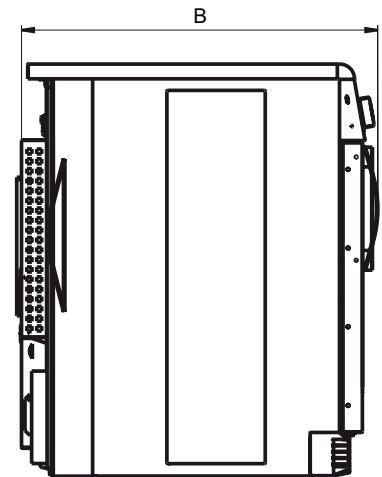
Electrical connections					
Heating alternative	Main voltage		Heating power kW	Total power kW	Recommended fuse A
		Hz			
Electric heated	220-230V 1 -	50/60	3.1	3.3	16
	240V 1 -	50/60	3.2	3.5	16
	220-230V 3 -	50/60	3.1	3.3	16
	240V 3 -	50/60	3.2	3.5	16
	220-230V 3 -	50/60	4.9	5.1	16
	240V 3 -	50/60	5.1	5.4	16
	380-400V 3 -	50/60	4.9	5.1	10
	415V 3 -	50/60	5.1	5.3	10
	440V 3 -	60	5.1	5.4	10
	480V 3 -	60	5.1	5.3	10
	380-400V 3N -	50/60	4.9	5.1	10

Connections		T5130
Air outlet	mm	∅ 100
Maximum air flow	m ³ /h	240
Condensate		-
Maximum static back pressure	Pa	80
Sound levels		
Airborne sound level	dB(A)	<70
Heat emission		
% of installed power, max		15
Shipping data*		
Shipping volume	net, kg m ³	58 0.51
Accessories		
Stacking frame for mounting T5130 on top of W555H		x
Stainless steel base frame		x
Dimensions in mm		
A Width		597
B Depth		725
C Height		839
D		138
E		50
F		89
G		200
1 Operating panel 2 Door opening ∅ 370 mm 3 Electrical connection 4 Exhaust connection		

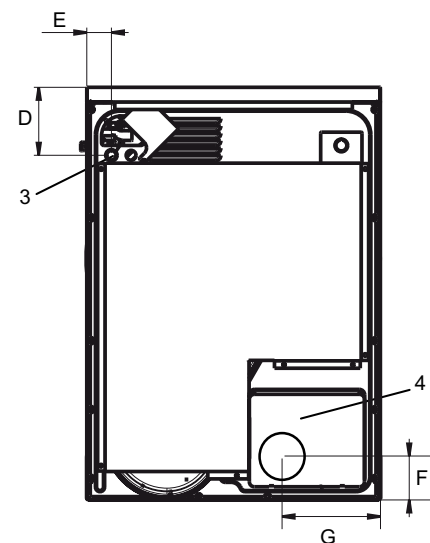
* Average data. Crated weight/shipping volume depends on configuration. Please contact logistics for exact measures.



Front



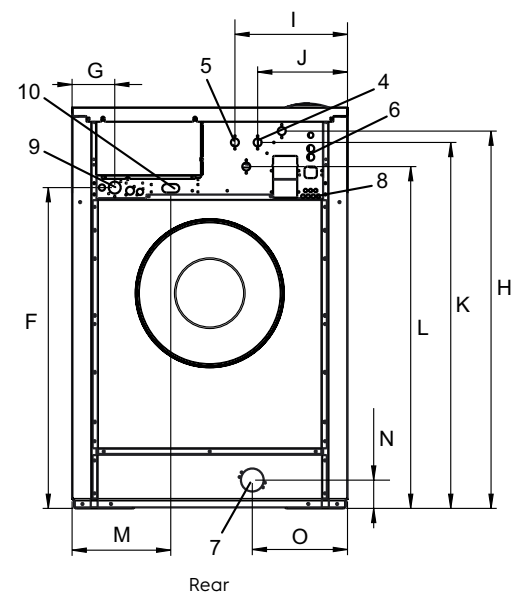
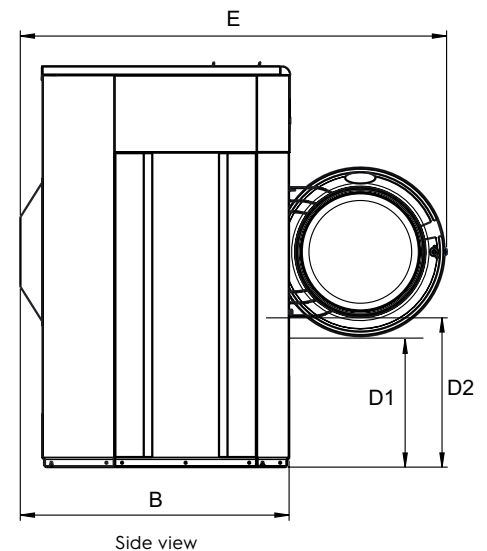
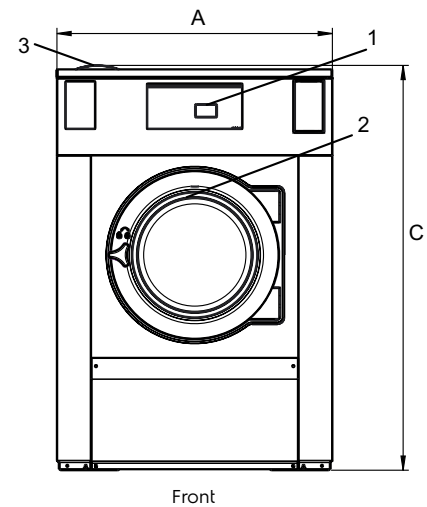
Left side



Rear side

Electrical connections					
Heating alternative	Main voltage		Heating power kW	Total power kW	Recommended fuse A
		Hz			
Electric heated	220-240V 3 ~	50/60	18.0	18.3	50
	380-415V 3N ~	50/60	18.0	18.3	35
	440V 3 ~	60	18.0	18.4	25
	480V 3 ~	60	18.0	18.4	25
Steam or Non heated	220-480V 1 ~	50/60	-	2.3	10

Water and steam connection		W5180H	
Water valves	DN	20	
Water pressure	kPa	200-600	
Capacity at 300 kPa	l/min	30	
Drain valve	∅ mm	75	
Draining capacity	l/min	170	
Steam valve	DN	15	
Steam pressure	kPa	300-600	
Liquid detergent supplies		5	
Floor requirements			
Frequency of the dynamic force	Hz	17.6	
Floor load at max extraction	kN	4.2 ± 1.0	
Sound levels			
Sound power/pressure level at extraction*	dB(A)	84/68	
Sound power/pressure level at wash*	dB(A)	66/50	
Heat emission			
% of installed power, max		5	
Shipping data**			
Weight	net, kg	354	
Shipping volume	m ³	1.66	
Accessories			
Steel base		x	
Hose kits for water or steam		x	
Fluff collector		x	
Dimensions in mm			
A	Width	970	
B	Depth	947	
C	Height	1426	
D1		461	
D2		526	
E		1501	
F		1130	
G		150	
H		1329	
I		397	
J		317	
K		1289	
L		1204	
M		348	
N		100	
O		335	
1	Operating panel	7	Drain
2	Door opening ∅ 435 mm	8	Liquid detergent supply
3	Detergent box	9	Electrical connection
4	Cold water	10	Steam connection
5	Hot water		
6	Re-used water		



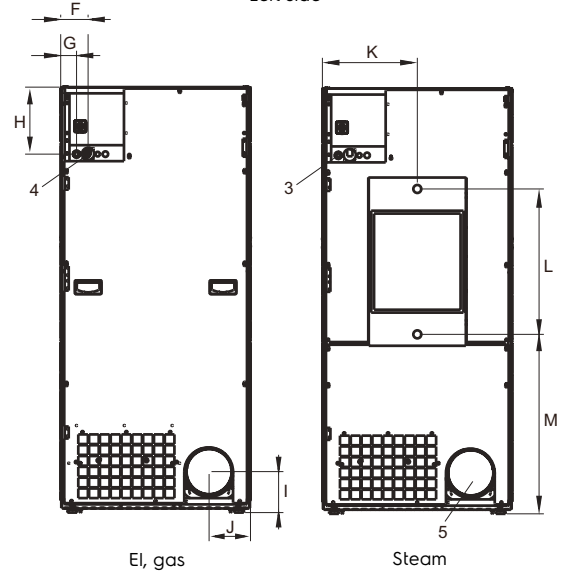
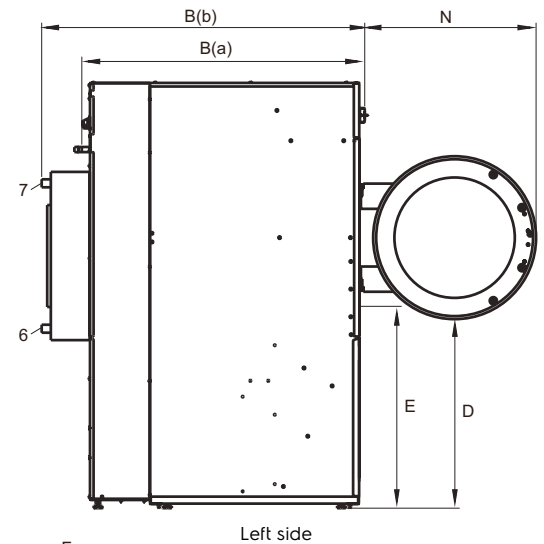
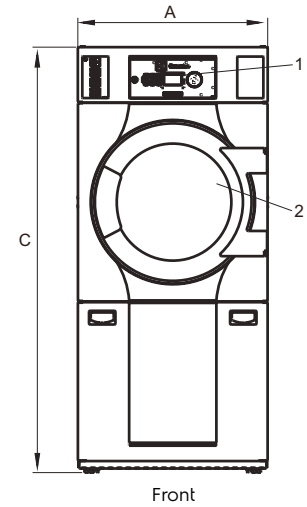
Front and side panels in light grey and blue (RAL 260 70 05, 250 60 30)

* Sound power levels measured according to ISO 60704.

** Average data. Crated weight/shipping volume depends on configuration. Please contact logistics for exact measures.

Electrical connections					
Heating alternative	Main voltage		Heating power kW	Total power kW	Recommended fuse A
		Hz			
Electric heated	220-240V 3 ~	50/60	13.5/18.0	14.6/19.1	50
	380-415V 3N ~	50/60	13.5/18.0	14.6/19.1	25/35
	440V 3 ~	60	13.5/18.0	14.6/19.1	25/35
	480V 3 ~	60	13.5/18.0	14.6/19.1	20/25
Gas heated/ Steam heated	220-240V 3 ~	50/60	-	1.1	10
	380-415V 3N ~	50/60	-	1.1	10
	440V 3 ~	60	-	1.1	10
	480V 3 ~	60	-	1.1	10

Steam, gas and air connections			T5350
Steam		ISO 7/1-R	1"
Steam pressure			kPa 100-1000
Steam consumption			kg/h 65
Condensate		ISO 7/1-R	1"
Gas		ISO 7/1-R	1/2"
Gas pressure	Natural gas	Pa	2000
		mbar	20
	Propane	Pa	2800-5000
		mbar	28-50
Air outlet		Ø mm	200
Evacuated air,	el 18 kW	m ³ /h	1000
	gas 21 kW	m ³ /h	1000
	steam	m ³ /h	1000
Pressure drop	el 18 kW	Max. Pa	270
	gas 21 kW	Max. Pa	270
	steam	Max. Pa	270
Sound levels			
Airborne sound level		dB(A)	<70
Heat emission			
% of installed power, max			15
Shipping data*			
Weight		net, kg	177
Shipping volume		crated, m ³	1.96
Dimensions in mm			
A	Width		790
B(a)	Depth, el and gas		1177
B(b)	Depth, steam		1344
C	Height		1770
D			785
E			840
F			108
G			66
H			278
I			171
J			172
K			395
L			605
M			747
1	Operating panel		
2	Door opening Ø 580 mm		
3	Electrical connection		
4	Gas connection		
5	Exhaust connection		
6	Steam: in		
7	Steam: out		



* Average data. Crated weight/shipping volume depends on configuration. Please contact logistics for exact measures.



For more information about Efficient Dosing System please refer to the EDS Product Data Sheet

Efficient Dosing System	230V / 50Hz	115V / 60Hz
EDS complete kit with 2 pumps	988916901	988916911
EDS complete kit with 3 pumps	988916902	988916912
EDS complete kit with 4 pumps	988916903	988916913
EDS complete kit with 5 pumps	988916904	988916914
EDS complete kit with 6 pumps	988916935	988916915
EDS Controller	988916937	988916937
EDS 24V Interface	988916941	988916941

Low level alarm		Description	PNC
Power supply	230V AC 50/60Hz	Low level alarm	988916610
Peak power absorbed	4W	Low level probe	988916611
Number of level sensor inputs	7 opto-isolated	LLA & 2 probes	988916612
Entry probes	Low voltage contact	LLA & 3 probes	988916613
Degree of protection	IP 65	LLA & 4 probes	988916614
Alarm output	Relay contact NA250V 8A max.	LLA & 5 probes	988916615
		LLA & 6 probes	988916616

Electrolux name and description	Packaging 20 litres	Packaging 10 litres
W01 - lagoon Sensitive Detergent Professional detergent for natural/animal fiber	432731085	432731086
W03 - lagoon Sensitive Conditioner Professional conditioner for natural/animal fiber	432731087	432731088
W02 - lagoon Delicate Detergent Professional delicate universal detergent	432731089	432731090

For further information including spotting agents, please refer to the lagoon detergent Product Data Sheet



BASE; open front & sides


Suitable for models: W555H, T5130
Material: Stainless steel.

Art. No:
9889186-10 (height 200 mm)
9889186-11 (height 290 mm)
9889186-12 (height 555 mm)

BASE; closed front & sides


Suitable for models: Base frame for stacked installation
W555H, T5130.
Material: Galvanised steel.

Art. No:
9889182-26 (height 100 mm)



Suitable for models: W5180H
Material: Galvanised, grey painted steel
with stainless steel front panel.

Art. No:
9889188-11 (height 230 mm)

STACKING KIT


Suitable for models: W555H and T5130

Art. No:
9888020-31